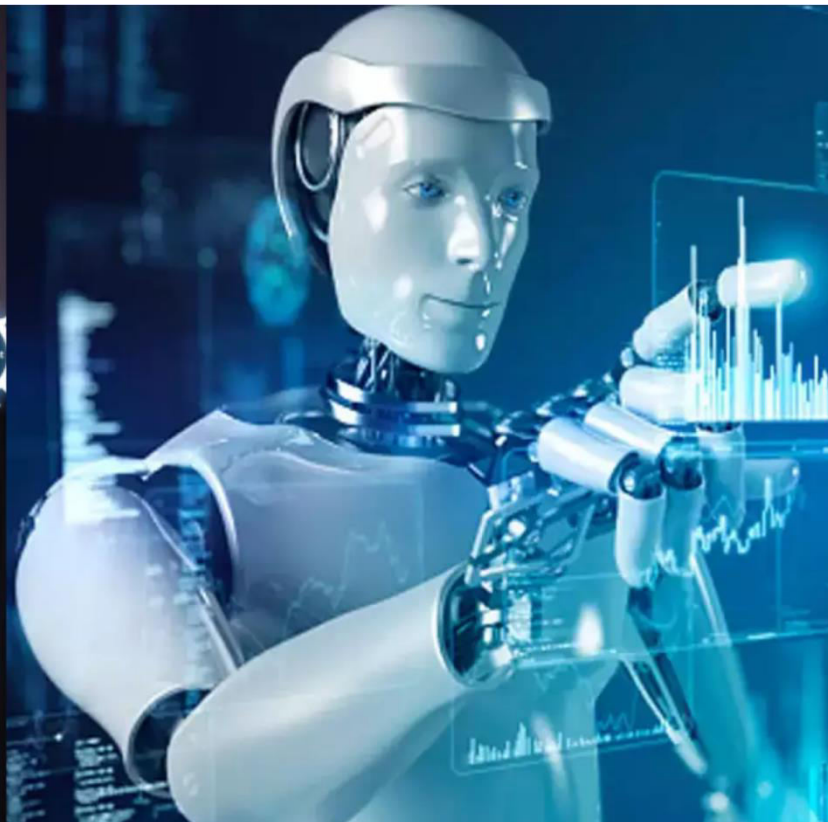




International Journal of Innovative Research in Science Engineering and Technology (IJIRSET)

(A Monthly, Peer Reviewed, Refereed, Scholarly Indexed, Open Access Journal)



Impact Factor: 8.699

Volume 14, Issue 3, March 2025

The Impact of Data Science on Society: Advancements, Applications, and Ethical Challenges

Dr. S. Anusuya¹, Dr. K. Anandapadmanabhan²

Assistant Professor, Department of Computer Science (Artificial Intelligence & Data Science), Sri Vasavi College,
Self Finance Wing, Erode, Tamil Nadu, India¹

Dean, Sri Vasavi College, Self Finance Wing, Erode, Tamil Nadu, India²

ABSTRACT: Data Science (DS) has emerged as one of the most transformative fields in the modern world. By utilizing statistical methods, algorithms, and computational techniques to analyze vast amounts of data, DS has revolutionized industries ranging from healthcare to finance, and even to social media. However, this rapid advancement comes with challenges and ethical concerns that require careful consideration. This article explores the evolution of Data Science, its impact on society, and the ethical dilemmas that arise from its widespread application.

I. INTRODUCTION

Data Science, at its core, is an interdisciplinary field that combines statistics, computer science, and domain-specific knowledge to extract insights from structured and unstructured data. It has become a driving force behind innovations that shape the way we live, work, and communicate. The exponential growth of data-driven by advancements in technology and the internet has created a new reality where data-driven decision-making powers everything from healthcare research to consumer choices. The significance of Data Science in today's world cannot be overstated.

This paper aims to explore the profound impact of Data Science on society, highlighting both the positive and negative consequences it brings. From revolutionizing industries like healthcare and finance to introducing ethical dilemmas concerning privacy and security, Data Science plays a pivotal role in the shaping of modern society.

II. THE EVOLUTION OF DATA SCIENCE

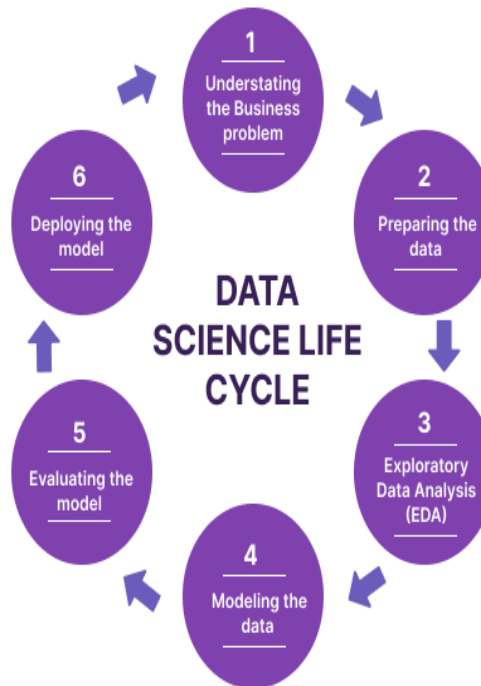
Data Science's roots can be traced back to the early days of statistics and computational methods. The field, however, came into prominence with the rapid expansion of the internet in the late 20th and early 21st centuries, leading to an explosion of data generated daily. According to McKinsey & Company (2011), the amount of data in the world doubles every two years, creating a pressing need for advanced techniques in data processing, storage, and analysis.

The, Data Science emerged from fields such as statistics, machine learning, and data mining, which sought to uncover patterns and relationships within data. The widespread adoption of big data technologies in the 2000s, such as Hadoop and NoSQL databases, marked a significant turning point. Today, Data Science is recognized as a separate discipline that encompasses the extraction of insights from massive datasets, including those generated by social media, online transactions, and sensors in the Internet of Things (IoT).

III. DATA SCIENCE LIFECYCLE

The life cycle of data science contains the following steps:

1. Understating the Business problem
2. Preparing the data
3. Exploratory Data Analysis (EDA)
4. Modeling the data
5. Evaluating the model

6. Deploying the model**3.1 understanding the Business Problem**

Every good business or IT-focused life cycle begins with "why," and the same is true for good data science life cycles. The business objective must be clearly understood because it will be the analysis's end result.

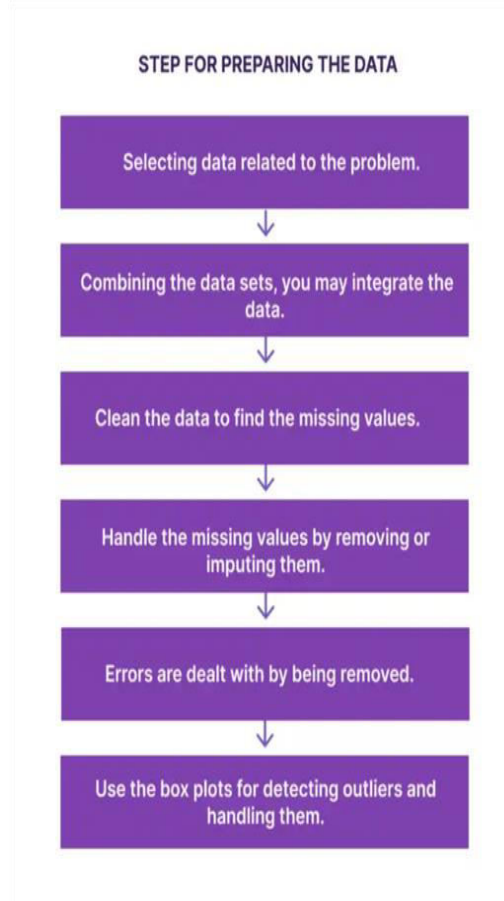
A crucial aspect of the early stages of data analytics is to look at business trends, develop case studies of related data analytics in other businesses, and conduct market research on the business's industry. These duties are regularly undertaken by stakeholders at this early stage of data analytics. All members of the team evaluate the internal infrastructure, internal resources, the total amount of time required to complete the project, and the technological requirements for the project. Once all of these analyses and evaluations have been completed, the stakeholders begin developing the primary hypothesis on how to resolve all business difficulties based on the current market condition after all of the preliminary analyses and evaluations have been completed.

In short, to define the business problem for the data science project following are the essential points to remember.

- List the issue that needs to be resolved.
- Define the project's potential value.
- Determine the project's risks, taking ethical issues into account.
- Create and distribute a flexible, high-level project plan.

3.2 Preparing the Data

The second phase of the data science life cycle is data preparation. This is to prepare the data to understand the business problem and extract information to solve the problem.



- Selecting data related to the problem.
- Combining the data sets, you may integrate the data.
- Clean the data to find the missing values.
- Handle the missing values by removing or imputing them.
- Errors are dealt with by being removed.
- Use the box plots for detecting outliers and handling them.

3.3 Exploratory Data Analysis (EDA)

Before really developing the model, this step entails understanding the solution and the variables that may affect it. To understand data and data features better, we create heat maps, bar graphs, and charting.

We need to keep a few factors in mind when analyzing the data, including checking that the data is accurate and free of duplicates, missing values, and even null values. Additionally, when working on model construction, we need to be sure that we recognize the crucial factors in the data set and eliminate any extraneous noise that can really reduce the accuracy of our conclusions.

70% of the data science project life cycle time is spent on this step. We can extract lots of information with the proper EDA.

3.4 Modeling the Data

This is the most important step of the life cycle of data science. This tells a lot about a data science project. This phase is about selecting the right model type, depending on whether the issue is classification, regression, or clustering. Following the selection of the model family, we must carefully select and implement algorithms to be used inside that family.

There are numerous hyperparameters. Therefore, we should determine the model's ideal hyperparameter values. We don't want to overfit. So hyperparameter tuning is important in model building. This hyperparameter tuning makes the model predict correctly.

3.5 Evaluating the Model

To evaluate the model to understand the model works better. There are two techniques used widely to assess the performance of the model. They are Hold-Out and Cross-Validation used in data science to evaluate models.

Holdout evaluation is the process of testing a model with data that is distinct from the data it was trained on. This offers a frank assessment of learning effectiveness.

Cross-validation is the process of splitting the data into sets and using them to analyze the performance of the data. In the cross-validation procedure, the initial observation data set is divided into two sets: a training set for the model's training and an independent set for the analyses' evaluation. Both approaches use a test set (unseen by the model) to assess model performance in order to prevent over-fitting.

If the evaluation does not yield a satisfying outcome, we must repeat the modeling procedure in its entirety until the necessary level of metrics is attained.

Metrics that are used to evaluate the models are:

1. ROC-AUC
2. Precision-Recall or Log-Loss
3. Regression models:
4. MSAE
5. MSPE
6. R Square
7. Adjusted R Square
8. Unsupervised Models:
9. Mutual Information
10. Rand Index

With the help of this step, we choose the right model for our business problem. Based on this step, we create the model best suits our needs.

3.6 Deploying the Model

The delivery method that will be used to distribute the model to users or another system is created.

For various projects, this step can mean many different things. Getting your model results in a Tableau dashboard might be all that is necessary. or as complicated as growing it to millions of users on the cloud.

Any shortcuts used during the minimally viable model phase are updated to systems fit for production. This phase is typically carried out by team members who are more "engineering-focused," such as data engineers, cloud engineers, machine learning engineers, application developers, and quality assurance engineers.

The many phases of the data science life cycle should be carefully considered. The entire effort is wasted if any step is carried out incorrectly because it will have an impact on the following phase.

For instance, improper data collection will result in information loss and a model that is not perfect. The model won't function effectively if the data is not adequately cleaned. The model will fall short in the real world if it is not adequately examined. Each phase, from business comprehension to model deployment, should receive the appropriate consideration, time, and effort.

IV. DATA SCIENCE IN VARIOUS INDUSTRIES

4.1 Healthcare

Healthcare is one of the most significant impacts of Data Science has been in healthcare. Through the analysis of large-scale medical data, Data Science has enabled better diagnoses, personalized medicine, and improved treatment outcomes. Machine learning algorithms, for example, are being used to detect early signs of diseases like cancer

through image recognition. Moreover, predictive analytics helps in forecasting disease outbreaks, optimizing hospital operations, and reducing medical costs.

For instance, the COVID-19 pandemic highlighted the role of Data Science in tracking infections, analyzing transmission patterns, and developing predictive models for healthcare interventions. Organizations like the World Health Organization (WHO) leveraged data to provide real-time insights into the progression of the pandemic and allocate resources effectively.

4.2 Finance and Economics

In the financial sector, Data Science is crucial for algorithmic trading, risk assessment, fraud detection, and customer personalization. The ability to analyze vast amounts of financial data has revolutionized investment strategies and allowed for high-frequency trading on a scale previously thought impossible. Companies like Goldman Sachs and JP Morgan use Data Science to predict market trends and manage risk. Furthermore, Data Science has facilitated the rise of fintech, enabling startups to offer services such as mobile banking, peer-to-peer lending, and robo-advisors. Predictive analytics also plays a critical role in understanding economic trends and helping businesses and governments make informed decisions. For example, machine learning models help predict stock market fluctuations and consumer spending behaviors, giving companies a competitive edge.

4.3 Social Media and Marketing

Social media platforms, such as Facebook, Twitter, and Instagram, rely heavily on Data Science to drive personalized user experiences, recommend content, and target advertisements. These platforms use advanced machine learning algorithms to analyze user behavior, which in turn allows them to serve personalized advertisements and content that increases user engagement.

In marketing, Data Science enables companies to perform advanced customer segmentation, optimize pricing strategies, and improve customer loyalty programs. By harnessing the power of data, businesses can gain valuable insights into consumer behavior and preferences, which can lead to more effective marketing campaigns and higher ROI.

V. ETHICAL IMPLICATIONS OF DATA SCIENCE

The Data Science has the following significant ethical concerns such as.

5.1 Privacy and Data Security

One of the most pressing issues is the privacy of personal data. As Data Science relies on vast amounts of data, including sensitive personal information, there is a growing concern about how this data is collected, stored, and used. Data breaches and unauthorized access to personal information have raised alarms regarding individuals' rights to privacy.

For example, in the 2018 Facebook-Cambridge Analytica scandal, personal data from millions of users were harvested without consent, leading to significant ethical and legal scrutiny. The advent of stricter data protection regulations, such as the General Data Protection Regulation (GDPR) in the European Union, is an attempt to address these concerns and establish standards for data usage.

5.2 Bias and Discrimination

Another significant challenge is algorithmic bias. Machine learning algorithms are often trained on historical data, which can reflect existing societal biases. As a result, these algorithms may perpetuate or even exacerbate discrimination. For example, facial recognition software has been shown to have higher error rates for people with darker skin tones, leading to concerns about its fairness and the potential for racial profiling.

Bias in data can have serious consequences in fields like criminal justice, hiring practices, and lending decisions. Studies have shown that predictive policing algorithms, which are designed to predict crime hotspots, can disproportionately target minority communities based on biased historical crime data.

VI. THE FUTURE OF DATA SCIENCE

The future of Data Science holds immense potential, with advances in artificial intelligence (AI), machine learning, and quantum computing poised to push the boundaries of what is possible. Innovations such as autonomous vehicles, smart cities, and personalized medicine will continue to rely heavily on Data Science.

However, as the field progresses, it will be essential to address the ethical challenges that come with its growth. Policymakers, organizations, and data scientists must collaborate to create frameworks that ensure responsible data usage while promoting innovation.

VII. CONCLUSION

Data Science has proven to be a transformative force in society, shaping industries, economies, and daily lives. Its applications have led to groundbreaking innovations in healthcare, finance, and social media, among others. However, as its influence continues to expand, ethical concerns surrounding privacy, security, and fairness must be carefully considered and addressed. The future of Data Science will depend on the responsible use of data and the implementation of ethical standards to guide its development.

REFERENCES

1. McKinsey & Company. (2011). **Big data: The next frontier for innovation, competition, and productivity**. McKinsey Global Institute.
2. O'Neil, C. (2016). **Weapons of math destruction: How big data increases inequality and threatens democracy**. Crown Publishing Group.
3. European Commission. (2018). **General Data Protection Regulation (GDPR)**. <https://gdpr-info.eu/>
4. Angwin, J., Larson, J., Mattu, S., & Kirchner, L. (2016). **Machine bias**. ProPublica.
5. Brettel M, Friederichsen N, Keller M, Rosenberg M. How virtualization, decentralization and network building change the manufacturing landscape: an industry 4.0 perspective. *FormaMente* 2017;12.
6. Chessel A. An overview of data science uses in bioimage informatics. *Methods*. 2017;115:110–8.
7. Krukovets D, et al. Data science opportunities at central banks: overview. *Visnyk Natl Bank Ukr*. 2020;249:13–24.
8. Perveen S, Shahbaz M, Keshavjee K, Guergachi A. Metabolic syndrome and development of diabetes mellitus: predictive modeling based on machine learning techniques. *IEEE Access*. 2018;7:1365–75.
9. Sarker IH, Colman A, Kabir MA, Han J. Phone call log as a context source to modeling individual user behavior. In: *Proceedings of the 2016 ACM international joint conference on pervasive and ubiquitous computing (Ubicomp): adjunct, Germany*. ACM. 2016. p. 630–634.



INTERNATIONAL
STANDARD
SERIAL
NUMBER
INDIA



INTERNATIONAL JOURNAL OF INNOVATIVE RESEARCH

IN SCIENCE | ENGINEERING | TECHNOLOGY

 9940 572 462  6381 907 438  ijirset@gmail.com



www.ijirset.com

Scan to save the contact details